

Charlotte's Dice Bag

A. A. Leavitt-Reynolds
Arcana Vitae Design



By A. A. Leavitt-Reynolds

Arcana Vitae Design

To construct your very own Charlotte's Dice Bag you'll need:

- 1 skein of Purple Cascade 220 Wool (1 skeins = 220.0 yards). This is the main color (MC).
- 1 skein of Paton's Brilliant in color "Green Glitter". It really is more of a silvery blue... (1 skein = 166 yards) This is the contrasting color (CC).
- Size 5.0mm / US 8 straight knitting needles (I knit very tightly, so unless you love huge bags, use whatever is needed to get gauge)
- 1 set of 5.0mm/US 8 double pointed knitting needles (dpns) or what is needed to get gauge.
- Stitch marker or scrap yarn to make a stitch marker
- Darning needle or blunt end tapestry needle for weaving in ends.
- 30 or so dice to fill the bag.

Gauge: 22 stitches X 28 rows equals 4 inches of stockinette stitch.

~~~~~

Using the US 8 straight knitting needles CO 15 stitches. Knit 22 rows in seed stitch as follows:

Seed Stitch:

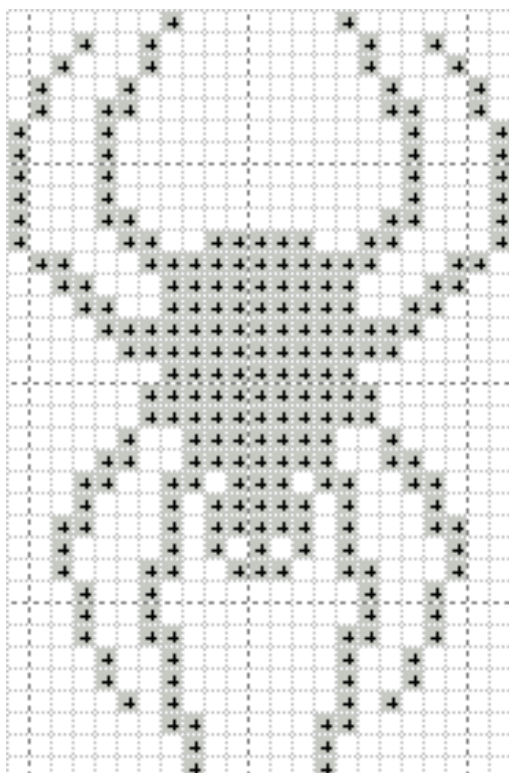
Row 1: K1, P1 and repeat to end. (Right Side)

Row 2: P1, K1 and repeat to end. (Wrong Side)

Bind off after 22 completed rows.

Now switching to your set of 5.0mm DPNs (or whatever you need to match my tight gauge) pick up 74 stitches from the edges of your square (15 on the top and bottom and 22 on the sides worked for me). If you need help picking up stitches, check out the nice tutorial on [knittinghelp](#). After you have picked up the 74 stitches and they are on your four double pointed needles feel free to place a stitch marker or tie a piece of waste yarn to the beginning of the round. Place marker and join together to begin working in the round (being careful not to twist the work).

Knit 3 complete rounds in stockinette (knit) and then begin chart. When knitting in more than one color carry the unused color LOOSELY (or else it will pucker unevenly when your bag is full) across the back of the work. On the longer stretches of a single color, wrap the unused color once around the working yarn to hold it in place on the back. Plastic bobbins can be very helpful when doing this intarsia work. I worked two silver bobbins at the same time. I essentially divided the design in half so that the yarn didn't travel too far on the back.



After completing the chart:

Knit one row in the MC (Main Color).

Next row: K5, yo, K5, yo and repeat to end, ending with a yo.

Next 10 rows: Knit

Bind off.

If desired use the contrasting color to attach a decorative border of single crochet on the bind off edge, or not.

Now create the i-cord for your drawstring bag: Using your dpns, cast on 3 stitches in the CC (contrasting color) and DO NOT Turn work. With right side still facing up, slide the stitches to the right needle tip and bring the yarn across the back of the needle and knit the three stitches. Knit in this way, repeating with sliding the stitches to the right tip until you've knit a tube about 20 inches long. Tie an overhand knot at the end of each end of the cord

Weave in all ends!

Steam blocking adds a professional touch to your already awesome bag. Be careful with washing in general or else you might get your bag to felt!

For an extra special touch you might try to imbue your dice bag with good vibes as you knit it by thinking about how you'll roll awesomely, or perhaps if it is a gift for a friend, how they will roll epically. That will really help them out so the next time they are a swashbuckling hobbit or a classy artistic vampire and they come across some werewolf they can take it down. Don't worry, the werewolf was a jerk anyway.....single too, so no family or pups to worry about.

Copyrighted by Creative commons...share and share alike...or roll for damage.



Charlotte's Dice Bag by [A. A. Leavitt-Reynolds](#) is licensed under a [Creative Commons Attribution-NonCommercial-Share Alike 3.0 Unported License](#).